

QLC+ control with Makey Makey

How to control QLC+ with a Makey Makey?

In QLC+, we can use key combinations, to trigger certain events in the light programme.

Makey Makey

Makey Makey: An Invention Kit for Everyone is an invention kit designed to **connect everyday objects to computer keys**. Using a circuit board, alligator clips, and a USB cable, the toy uses closed loop electrical signals to send the computer either a keyboard stroke or mouse click signal.

Find more about Makey Makey on: <https://makeymakey.com>

QLC+ Key Controls

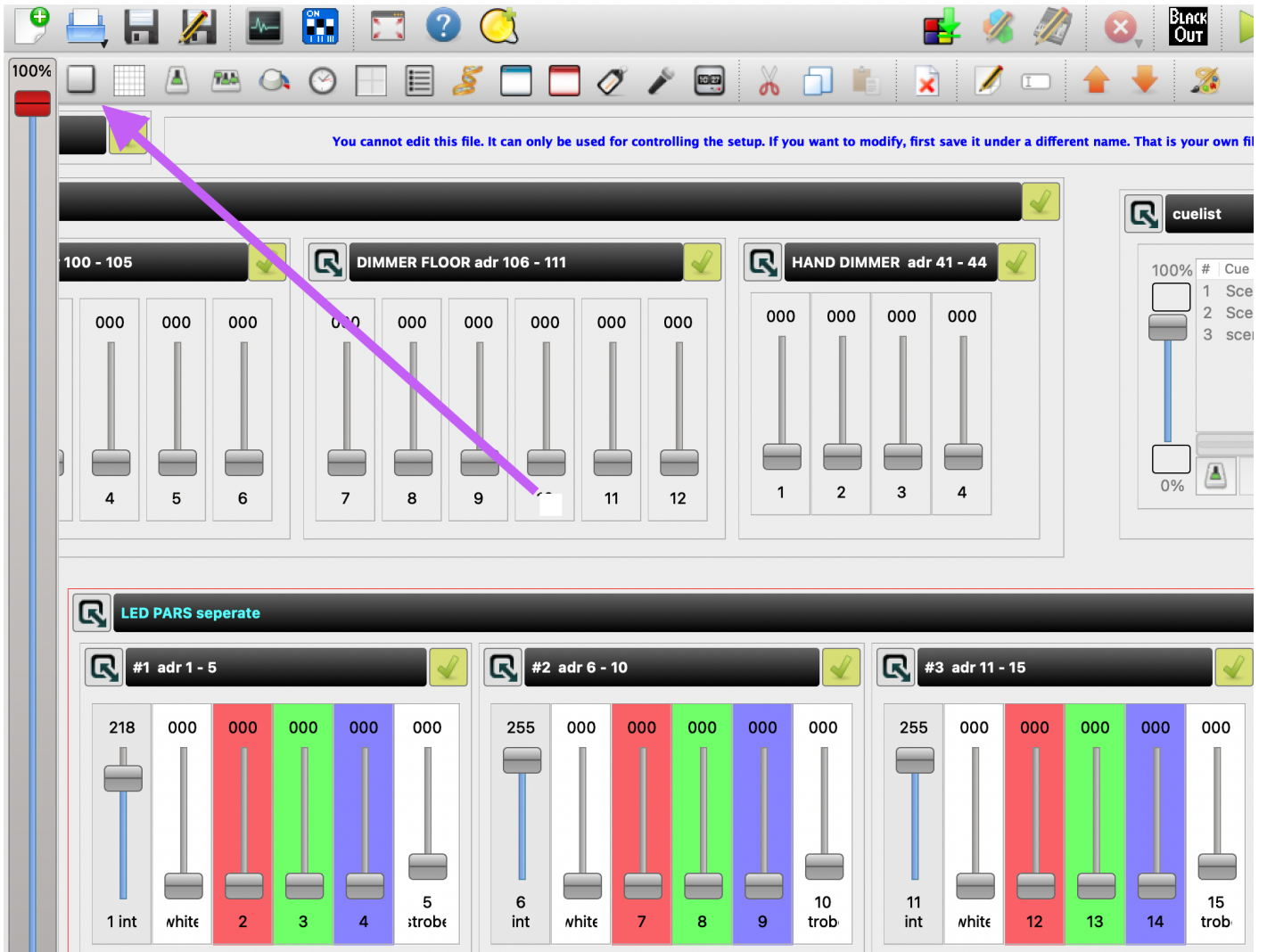
First we are going to open our QLC+ light desk. To know how to open a template patch from any Blackbox environment, check the QLC+ general startup guide in Bookstack or via the reservation tool.

[HKU Bookstack, control lights with QLC+](#)

When we open the template file, we can add faders, buttons and other interface elements to trigger or start/stop certain lights or scenes that we want.

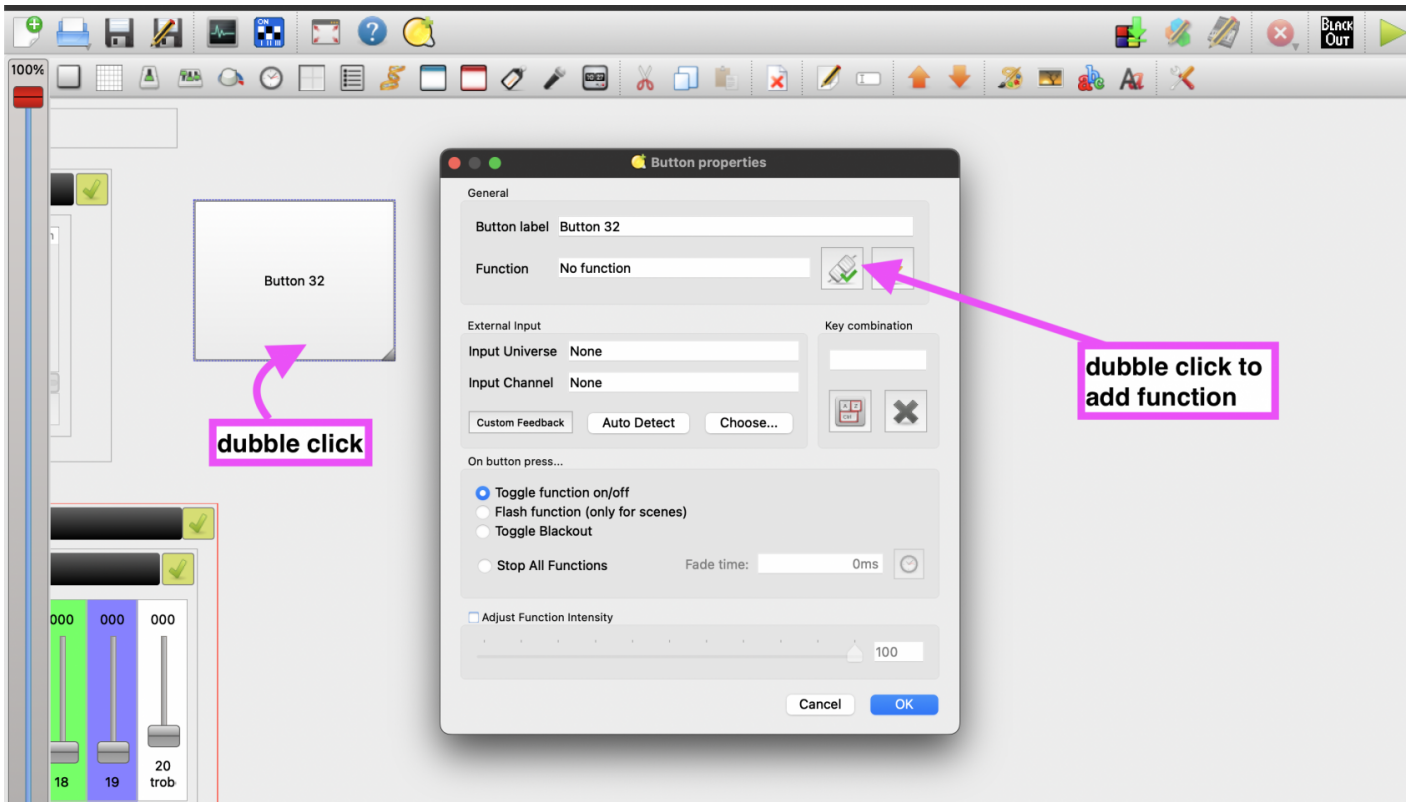
STEP 1: Add a button

Add a button to your light control desk. You can find the icon for adding a (empty) button in the top left corner of the screen.

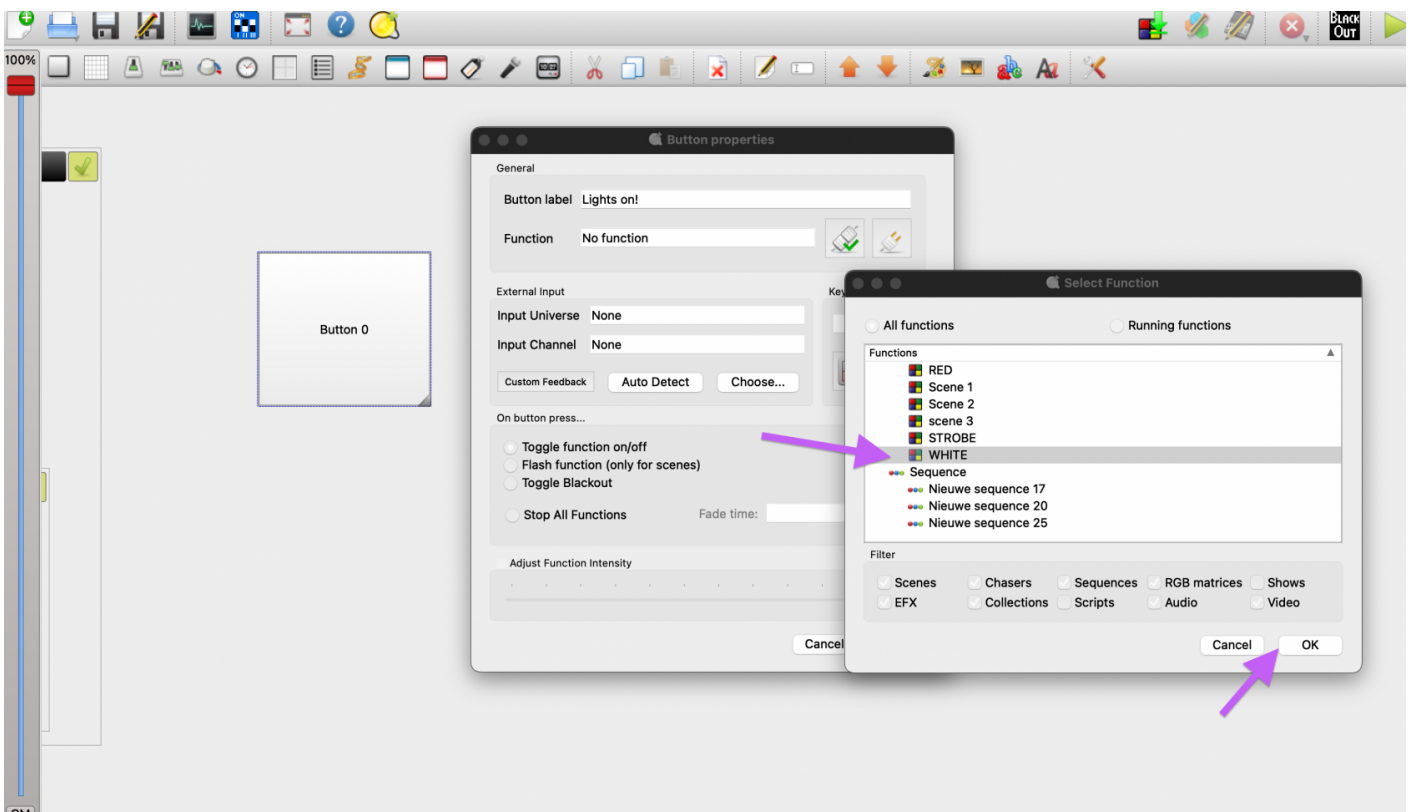


STEP 2: Assign the button to a function

When the button is added, it is still empty, it does not hold a function yet, and we need to assign one by double clicking on the button and then go to the "Function" area, where we can double click again on the control icon. You can add different function to a button ranging by controlling a cue, a scene or a whole effects chain of events.

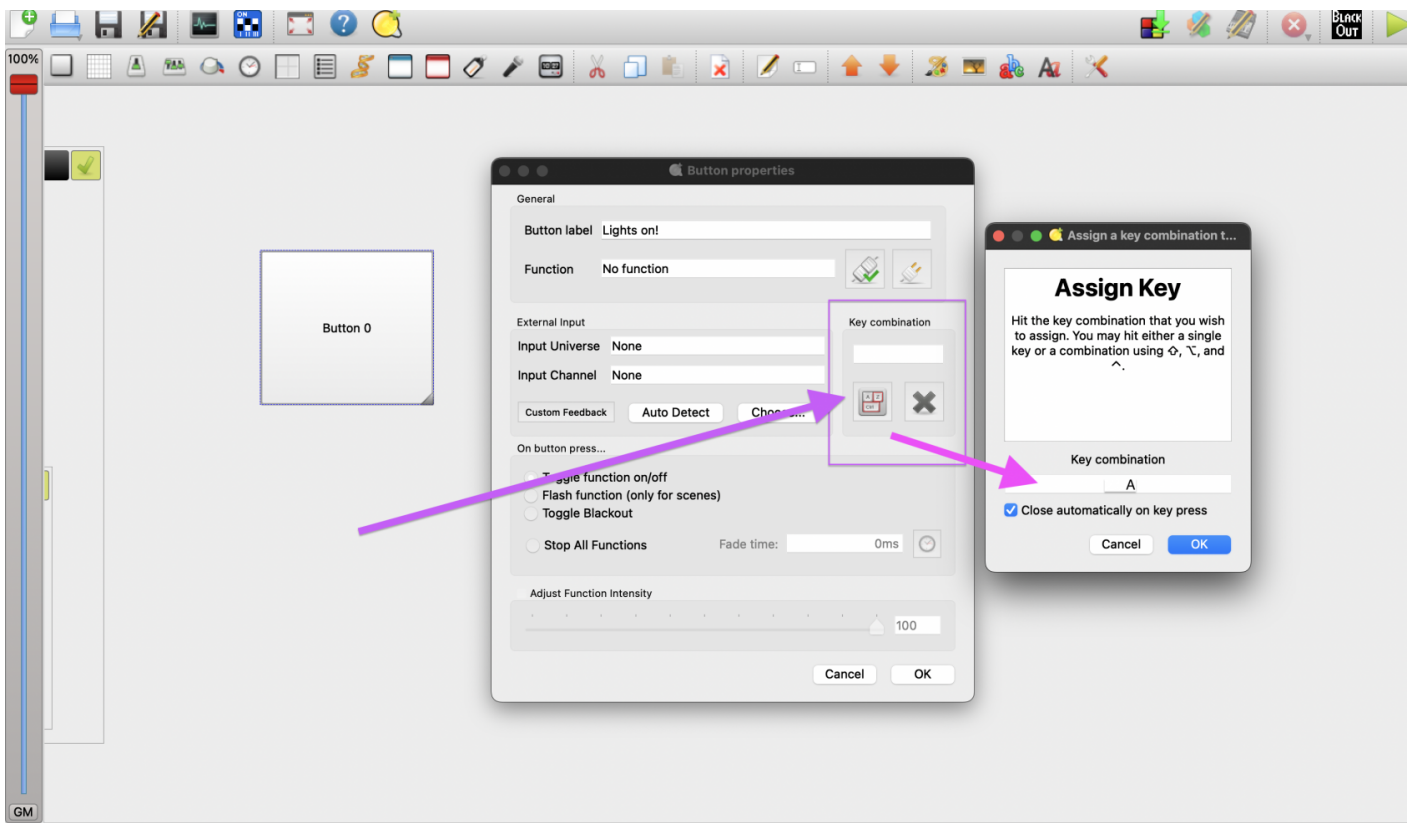


Let's choose a WHITE function, to make all the lamps turn on white when we press the button.



STEP 3: Control the Button by a keyboard function

After we have set a Function to the button, we are going to add a **keyboard control**. (can be one key or a combination of keys) For this we'll go to the right side of the Button Properties menu we were in when we added the function to the button, and double click on the keyboard icon.



Use letters or functions that match with your Makey Makey board. By default there is the arrow keys, spacebar, mouse click and various letters such as W, A, S, D, F, G. If you want to use other letters with your Makey Makey, you can also [re-map your Makey Makey](#) board.

STEP 4: Toggle or Flash!?

Now you have matched and assigned Makey Makey keyboard letters/functions to the button! There is one more thing we can take into account, when controlling the button, which is how do we want the button to respond.

Toggle:

every time the button is pressed, it will go from an OFF state to an ON (or the other way around), but it will stay there, **until** another button press. As a comparison, think about your standard light switch on the wall, when we press the light will go on, when we press again the light will go off. That's 2 presses.

Flash:

Flash is used to make the button go and execute the function we assigned it, only when **we press and hold it**. This is particularly handy when you want a certain effect of lights only to happen once, when the Makey Makey is triggered.

What's next?

so after you've successfully connected a keyboard letter to a button in QLC+ try experimenting with other ways of interacting with the light control desk and Makey Makey. You can also assign keypresses to other interface elements of QLC+ such as sliders, knobs and playing/stopping CUE lists with your own scenes.

More info on QLC you can find in the Manual: [QLC+ Manual](#)

More tutorials will follow using MIDI controllers and other software such as Isadora as inputs for triggering functions in QLC.

Revision #2

Created 2023-10-11 13:16:00 UTC

Updated 2025-02-11 12:13:55 UTC