

QLC+

QLC+ is designed to streamline and simplify the process of controlling DMX or analog lighting systems.

QLC+ is open source, compatible with most fixtures & dmx hardware. Can be triggered with midi, audio & osc. Runs on Windows, MacOS or Linux.

Check out: <https://www.qlcplus.org/> for in depth info.

Download [QLC here](#)

Go for the stable 4.x.x version if you are practising to use this tool in the Blackbox @ HKU

Use this startup guide when working with a pre-programmed version of QLC (template), like installed in the Blackboxes. The added fixtures and virtual console will be different in every Blackbox, depending on the facilities.

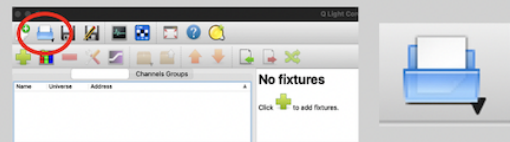
QLC+ STARTUP GUIDE

Start the software QLC+ from the Desktop

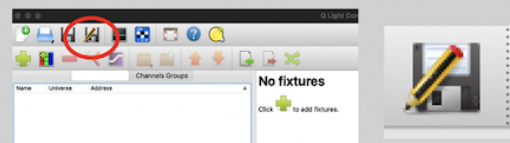
Choose button "Q light Controller Plus"
The Fixture editor is only used when we want to add lamps that are not in the default system.



The template file will be empty, you need to **OPEN** your own file or our Blackbox standard template file in QLC+



When the files is open, first before anything else, **SAVE-AS** this template under your own name! Otherwise any mistakes or alterations will alter the template standard file



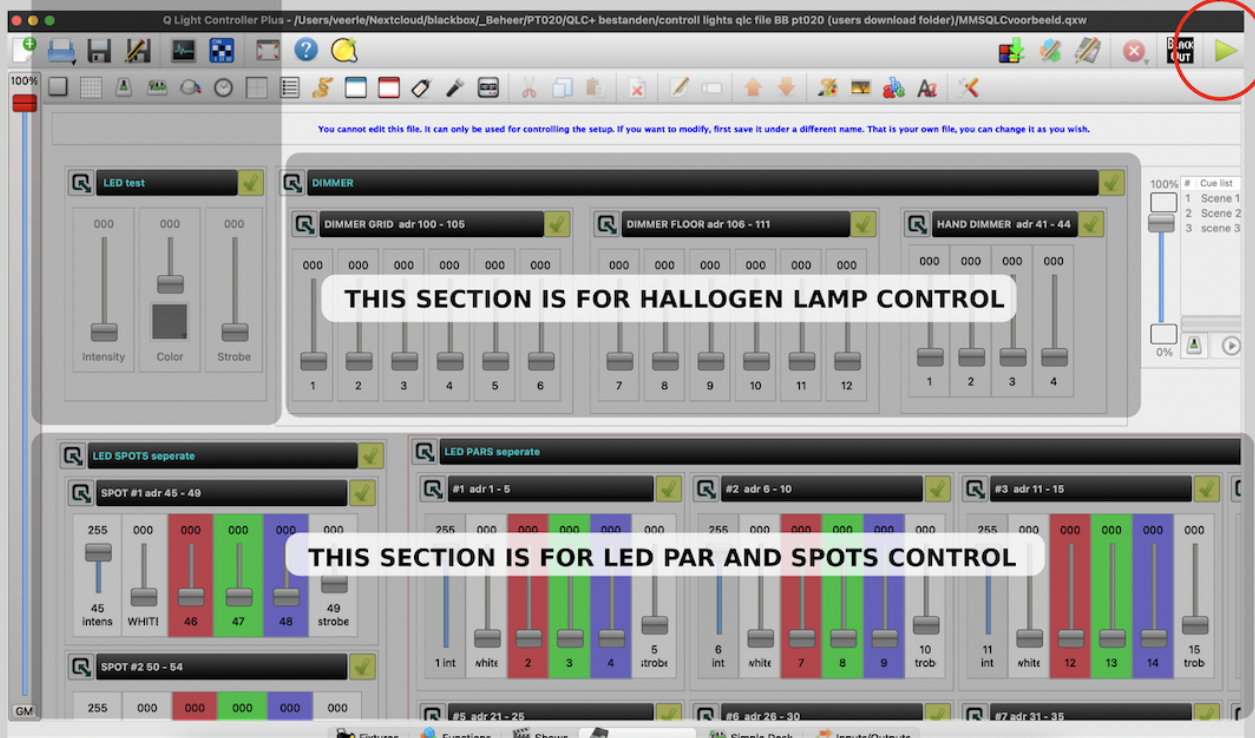
This part controls **ALL** lamps in the same colour, can be handy for extra worklights, but turn these faders off when you want individual lamp control.



The lamp addresses are located on the side of the LED Par and Spots, in QLC+ you can find the corresponding lamp addresses in the template.

PLAY is used to start the lights.

STOP is used to edit the template and change the graphic user interface.



To start working on a scene in QLC+ and make a que list, follow this guide:

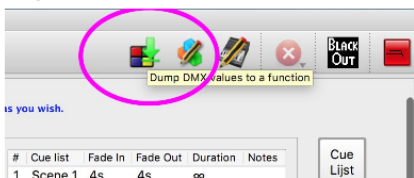
QLC+ create a scene (cue list)

work in "control mode" top right corner press the green play button

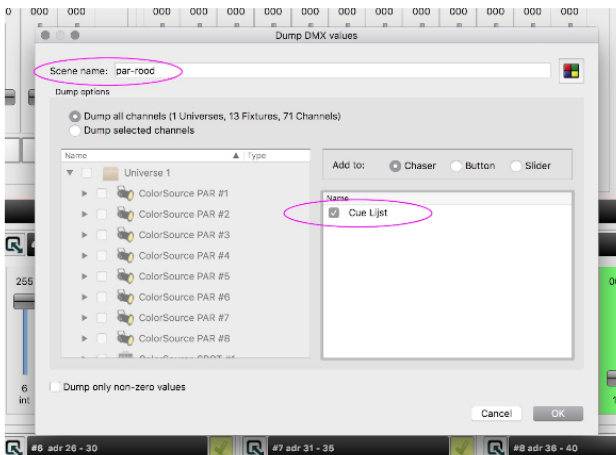
1 Create your first scene by changing the faders of the fixtures you want to use.



2 When your satisfied use the dump to scene button (top right of screen) to store these settings as your first scene.



3 Change the name of the scene to something you see fit. Choose to add it to the existing cue list.

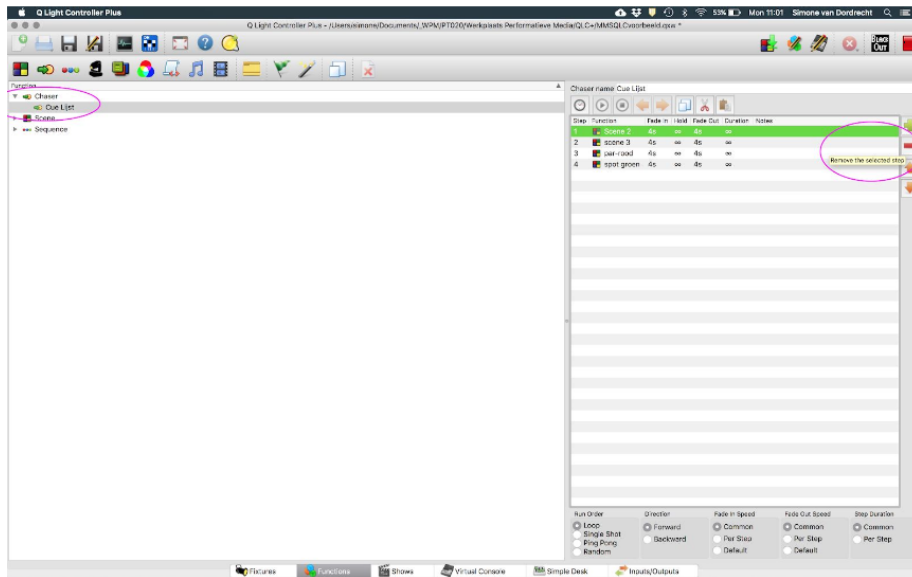


4 Press OK and create your 2nd scene. Repeat step 2 & 3 until you have enough steps for your scene.

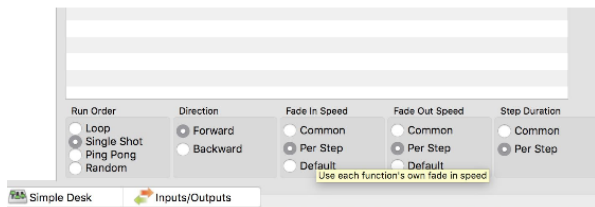
To test & to be able to change settings turn all your faders & fixtures off.

Go to the tab “functions” in the bottom of your screen.

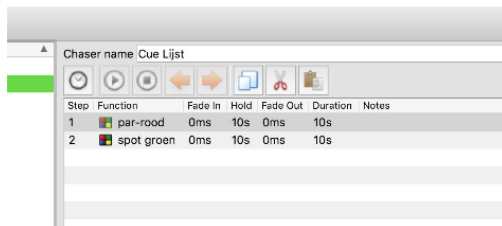
5 Doubleclick on “Chaser” and then Cue list to make the settings visible on the right. On the right you see your steps already added to the cue list, select the steps you don't want to use and remove them by pressing -.



6 To be able to change the fade, hold and duration settings for each scene first change the settings in the bottom of the screen:



7 Then change the fade, hold and duration settings of each scene



Go back to the virtual console tab, your cuelist should be visible on the top right. To test your Cue list press the play button of that module.

Revision #3

Created 2025-02-11 11:13:09 UTC by Astrid

Updated 2025-02-17 09:54:42 UTC by Daan