

Controlling Light @ Blackbox Theatre (QLC)

Lighting in the Blackbox @ Janskerkhof is controlled through ArtNet
You can connect to this system from your own laptop or with the Blackbox computers.

At this Blackbox we have 8 pars, the DMX each starting on the decimal: 10, 20 , 30 etc. The 3 spots are on adres 110, 120, 130 (the starting adres matches the sticker on the fixture)

They are named Colorsource PAR #1, #2, #3 etc, The spots are named Colorsource Spot #1, #2, #3.

They are all set to 5 channels. (Intensity, RGB, Strobe)

These fixtures can be hung anywhere you need them to design your work. Always use safeties to have a two point connection to the grid. The fixtures do not need to be returned to a specific spot after use.

0. Login

to computer GW95 tot use QLC with a preset patch.

For working on your own laptop or the other computer check [this page](#)

1. Turn on the electricity for the grid.



1>0 :)

2. Connect to the local intranet :

WPMartNet

The password is provided by the host during your introduction, this router also has internet acces.

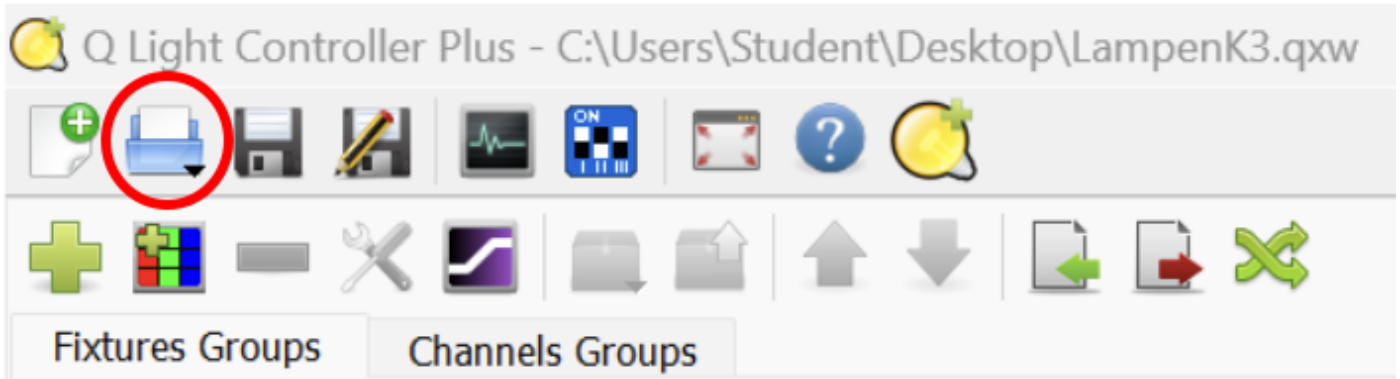
3. Open QLC (logo on the desktop or taskbar)




(if prompted choose the option: Q Light Controller Plus)

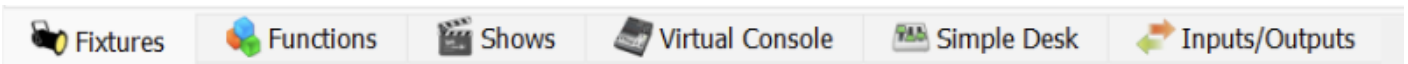
This opens an empty file!

To add the Blackbox fixtures, open the QLC patch on the desktop (again) using the 'open' logo in the top bar:



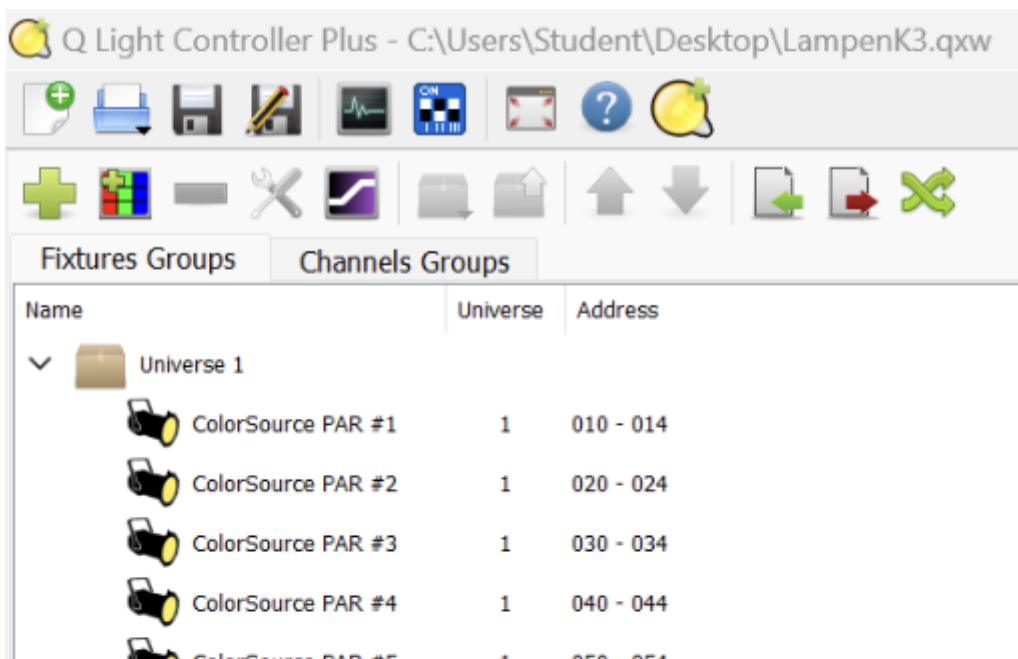
And choose the "[Lampen K3.qxw](#)"  file on the desktop
(yes this is confusing, you are opening the same file again...)

3. Check the TABS at the bottom:



Fixtures: Shows you which fixtures have been added to the patch. This means these can be controlled when added to this daisychain. *If you want to add fixtures, please 'save as' this file for your personal patch.*

You should now see fixtures added:



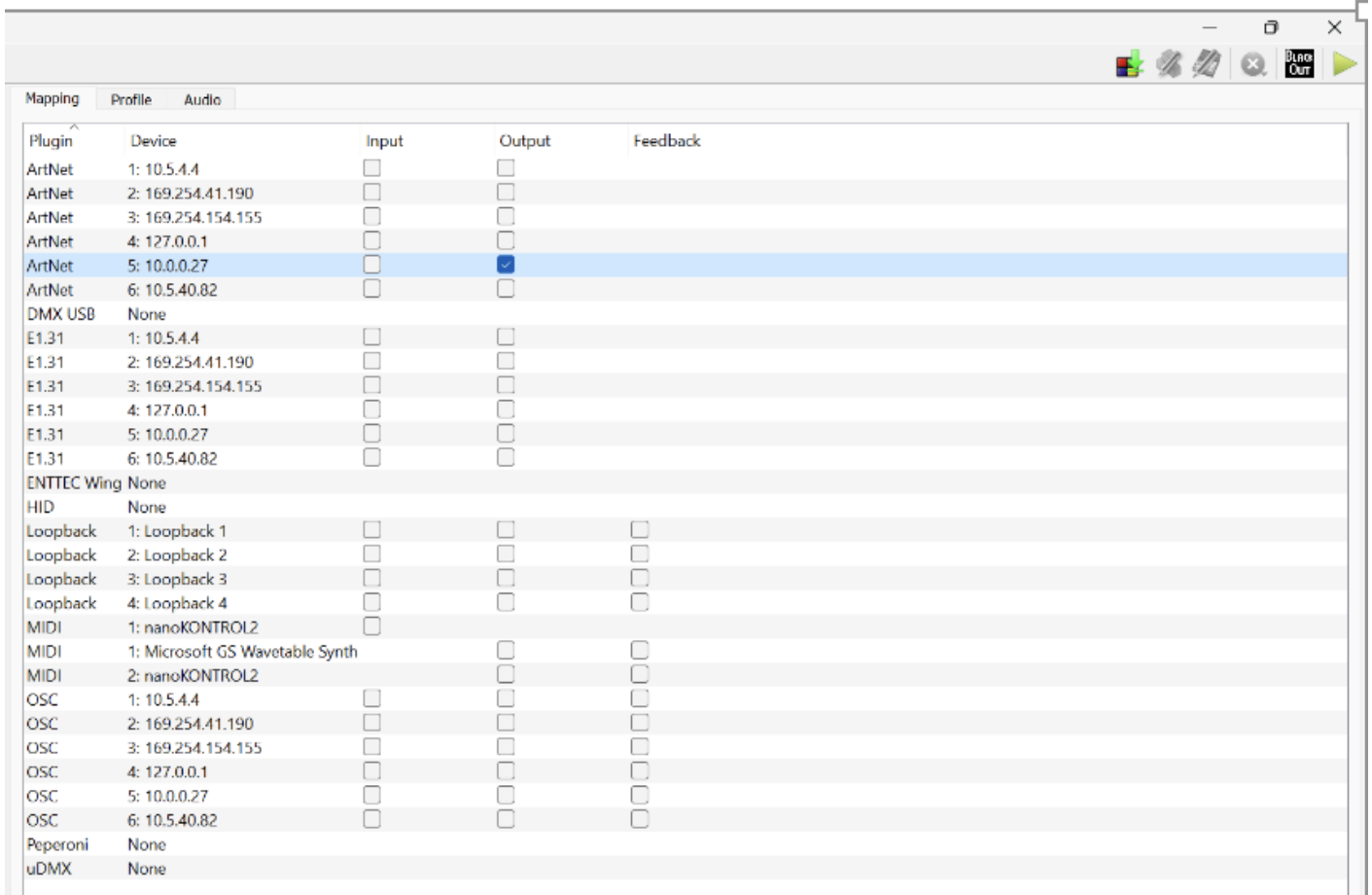
Inputs/outputs:

Shows you the connection to send the data into the daisychain over WiFi.

For this Blackbox & ArtNet always choose the 10.0.0.xx address for OUTPUT

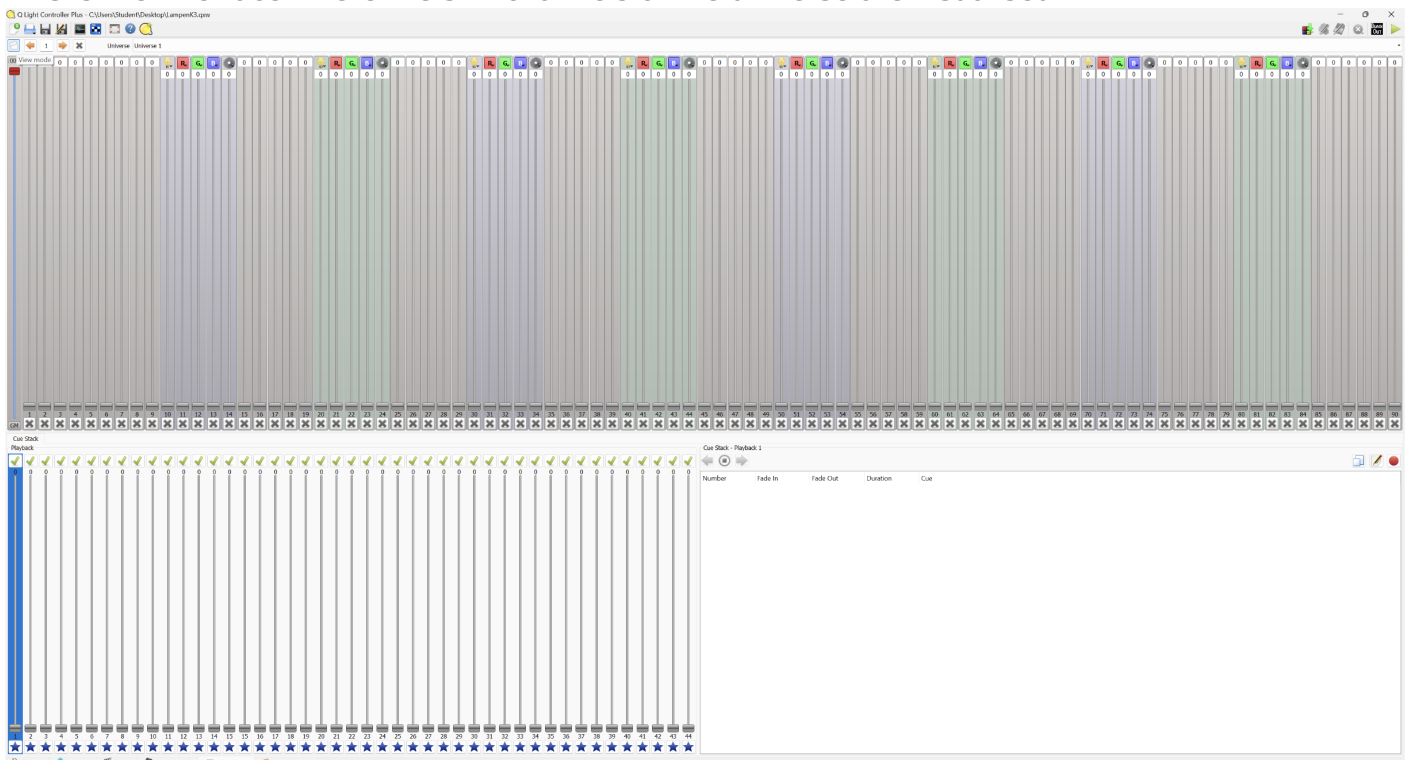
>> This only shows up if you are connected to the WPMartNet wifi! the XX number may vary.

If you don't see this option, check your wifi connection.

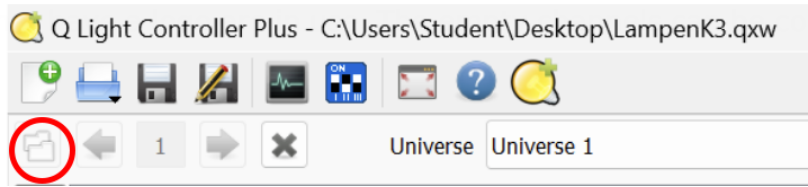


Simple Desk:

This is the interface where the 512 channels of the universe are visualised

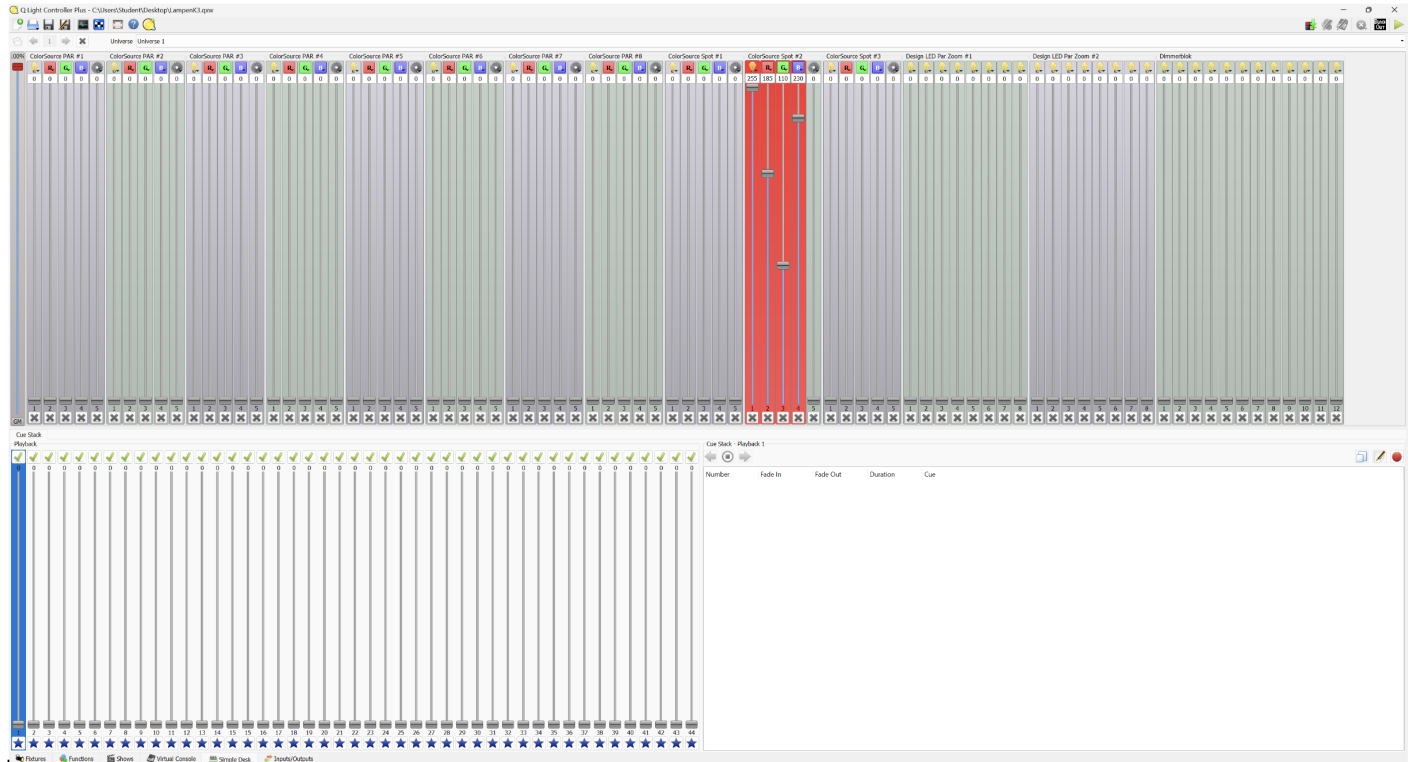


The channels that are confusing, to hide them,



press this logo:

Your interface should now look like this:

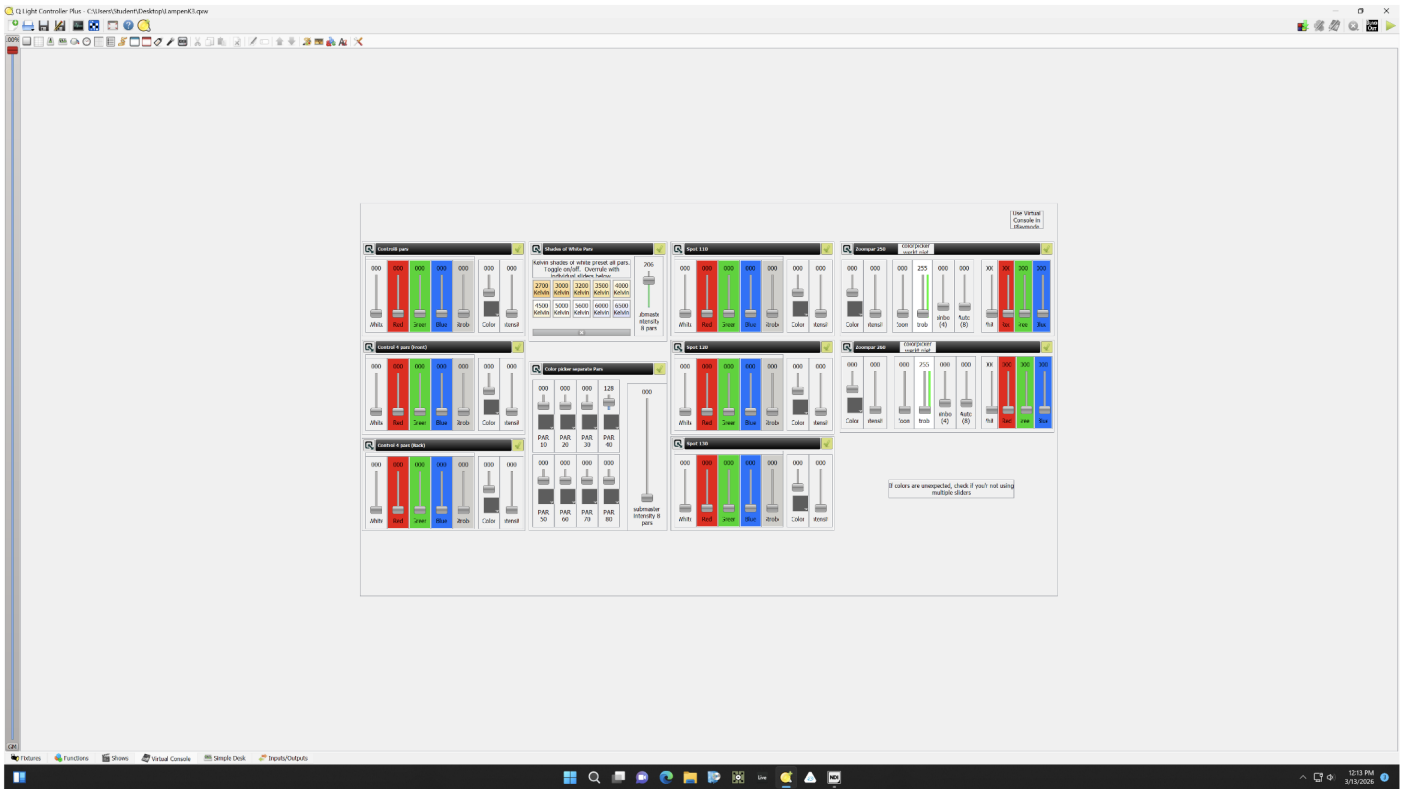


To control a fixture, always use the intensity slider combined with colours.

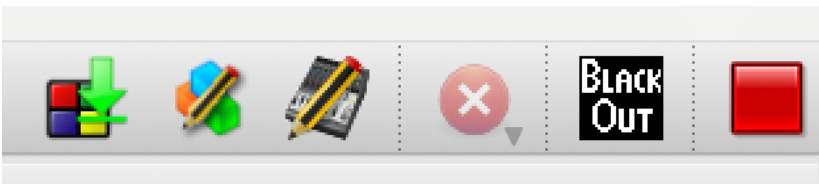
Virtual Console: This is a virtual lighting desk for when all the pars & spots are added to the daisychain.



Press the top **Play** button to access the possibilities (controlling 4/8 pars, all pars in white balance presets or pars/spots with the colorpicker. Note: this console is NOT the best design... also, when using the simple desk, it overrules the virtual console which may be confusing)



When using this feature & finished, "unplay" by pressing the red square. Else you cannot quit the program.



Functions/Shows

Are not yet used in this patch, but you can look up info and tutorials on this page:

https://www.qlcplus.org/old/docs/html_en_EN/index.html

5. Troubleshooting

The Blackbox at Janskerkhof is a workshop. Students are encouraged to change, understand and manage setups, but this may result in an environment that is less plug & play...

If the lights are not working, check all of the above steps first.

The WiFi sometimes disconnects.

Fixtures may not be in the daisychain, check the cables and if they are truly connected to the system. Power & data.

If the display is showing the correct adres, but blinking it is expecting but not receiving DMX data.

Lights giving unexpected colours? Check the adres on the fixture. Does it match the sticker?

Change it back.

If for any reason you ever adapt the adres number: put it back to the sticker default afterwards!

If anything weird still persists, you try to contact Astrid (check the QR on the Blackbox front door).

If anything seems broken, or breaks, always let her know.

Revision #8

Created 2026-03-13 10:28:53 UTC by Astrid

Updated 2026-03-25 15:21:30 UTC by Astrid