

Kinect in Isadora

To use Kinect in Isadora you need to download a couple of plugins from the Troikatronix page;

<https://troikatronix.com/add-ons/openni-tracker/>

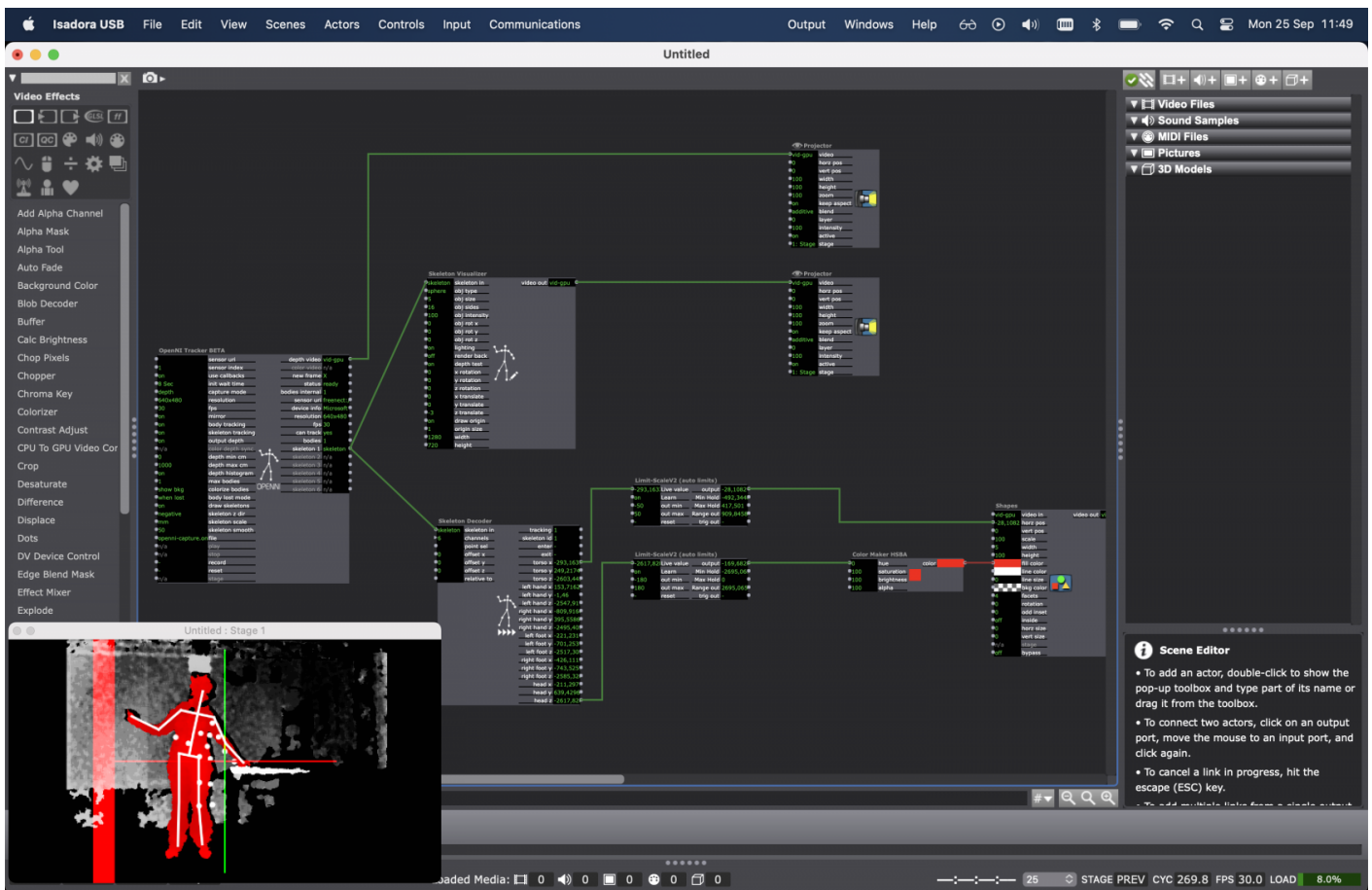
Read the instruction with attention & follow them.

Kinect 360 works on Mac air & Mac pro (M1 with Rosetta)

Kinect V1 works on Mac pro (M1 with Rosetta)

Connect your Kinect before starting Isadora.

Add the nodes in the picture below (or open the patch shared in [nextcloud](#))



If your Kinect is not recognised by the software, try resetting or deleting the OpenNItracker or even adding it again.

Detailed explanation of the possibilities with Kinect in Isadora can be found here:

<https://troikatronix.com/add-ons/tutorial-openni-tracker/>

and here:

<https://www.youtube.com/embed/-fdsNW03TP4>

Revision #7

Created 2023-09-25 11:52:30 UTC by Astrid

Updated 2026-03-03 11:21:32 UTC by machiel